



Data Sheet
Glacier Series

GL-F-16M

Medical Freezer

GL-F-16M

Medical Freezer

GENERAL SPECIFICATIONS

Cabinet Type	Upright
Capacity	450L / 15.89 cu ft
Internal Size(W*D*H)	(650*570*627mm)*2 (25.59*22.44*24.68in)*2
External Size(W*D*H)	810*735*1960mm 31.88*28.93*77.16in
Package Size(W*D*H)	895*820*2035mm 35.23*32.28*80.11in
Net Weight/Gross Weight	136/148kgs, 299/326lbs

PERFORMANCE

Temperature Setting	-15 ~ -25 °C
Ambient Temperature	16 - 32°C
Cooling Performance	-25°C
Climate Class	N
Controller	Microprocessor
Display	Digital display

REFRIGERATION

Compressor	2pc
Cooling Method	Direct cooling
Defrost Mode	Manual
Refrigerant	R600a
Insulation Thickness(mm)	80

CONSTRUCTION

External Material	Powder coated material
Inner Material	Aluminum plate with spraying
Shelves	6*2(ABS)
Door Lock with Key	Yes
Door	2
Access Port	2pcs. Ø 25 mm
Casters	4 (2 caster with brake)
Data Logging/Interval/Recording Time	USB/Record every 10 minute / 2 years
Backup Battery	Yes

ALARM

Temperature	High/Low temperature High/Low temperature
Electrical	Power failure , Low battery
System	Sensor error, USB datalog failure, Condenser high, Door ajar, Main board communication error

ELECTRICAL

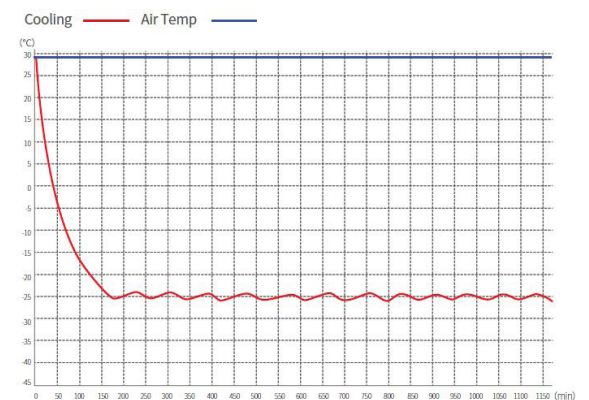
Power Supply(V/HZ)	110/60
Power(W)	420

OPTIONS ACCESSORY

System	Printer, RS232
--------	----------------



▶ Performance Data / Cooling Curve



▶ External Dimensions

