

SENSOR PRODUCT LIST

| Ref ID | Name | Snap* | Probe ID | Range | Notes |
|----------------------|---------------------------------------------------|-------|----------------------|------------------------------------------------------------------|-----------------------------------------------------|
| SNT-X/RTD-X | Sentinel Next base unit | | XTEMP-3000-0000 | No Probes | Base WiFi communication unit |
| Probe-SNT-X-1 | PRO Temperature Probe System, single | ✓ | IPROBE-4000-0001 | -30°C to +150°C | Single temperature adaptor + 1m probe |
| Probe-SNT-X-2 | PRO Temperature Probe System, dual | | IPROBE-4000-0010 | -30°C to +150°C | Dual temperature adaptor + 1m probe |
| Probe-RTD-X-1 | RTD, Single Adaptor + 6ft Probe | ✓ | IPROBE-4101-0001 | -198°C to +150°C | Single Ultra Low Temp system |
| Probe-RTD-X-2 | RTD, Dual Adaptor + 6ft Probe | | IPROBE-4102-0001 | -198°C to +150°C | Dual Ultra low Temp System |
| Probe-RTD-X-1-A | RTD, Single Adaptor Only | ✓ | IPROBE-4101-0001-A | No Probes | Standard Audio Jack on Adaptor for Probe |
| Probe-RTD-X-2-A | RTD, Dual Adaptor Only | | IPROBE-4102-0001-A | No Probes | Standard Audio Jack on Adaptor for Probe |
| Probe-RTD-X-1-DC-A | RTD, Single Adaptor + Dry Contact | ✓ | IPROBE-4101-0002-A | No Probes | Standard Audio Jack on Adaptor for Probe |
| Probe-RTD-X-2-DC-A | RTD, Dual Adaptor + Dry Contact | | IPROBE-4102-0002-A | No Probes | Standard Audio Jack on Adaptor for Probe |
| Probe-RTD-X-6-P | RTD Probe only, 6ft | ✓ | IPROBE-4100-000-6-P | -198°C to +150°C | Probe length 6ft |
| Probe-RTD-X-10-P | RTD Probe only, 10ft | ✓ | IPROBE-4100-000-10-P | -198°C to +150°C | Probe length 10ft |
| Probe-RTD-X-1-DC | RTD Probe only with, single Dry Contact | ✓ | IPROBE-4101-0002 | -198°C to +150°C with dry contact | Specify Dry Contact when ordering |
| Probe-RTD-X-2-DC | RTD Probe only with, dual Dry Contact | | IPROBE-4102-0002 | -198°C to +150°C with dry contact | Specify Dry Contact when ordering |
| Probe-DC-X-1 | Single Dry Contact only | | IPROBE-4300-0001 | No Probes | Specify Dry Contact when ordering |
| Probe-DC-X-2 | Dual Dry Contact only | | IPROBE-4300-0002 | No Probes | Specify Dry Contact when ordering |
| Probe-SHT | T/RH Connector: Temp & RH | | IPROBE-4000-0004-1 | 0°C to +40°C 0 to +100% RH | RH is relative Humidity |
| Probe-SHT+ | T/RH Probe: Temp & RH | | IPROBE-4000-0004-2 | -40°C to +125°C 0 to +100% RH | Recommended for use: 10C to 30C |
| Probe-SNT-X-2-SHT | "PRO Temperature probe, dual with T/RH connector" | | IPROBE-4000-0011 | T probes: -30°C to +150°C T/RH connector: 0°C to +40°C" | 2 Temp Probes with T/RH connector; RH is 0 to +100% |
| Probe-SNT-X-CO2-PLUS | Large Range CO2 Probe with T/RH | | IPROBE-4400-0002 | 0-30% CO2 0 to 100% RH 0°C to 50°C" | |
| Probe-SNT-X-CO2-Amb | Ambient CO2 Probe with T/RH | | IPROBE-4400-0001 | 0 to 5000 ppm (CO2) 0 to 100% RH 0°C to 50°C | |
| Probe-SNT-X-WET | Water (Leak) detection Probe | | IPROBE-4200-0001 | 0Ω to 2MΩ | |
| Probe-DPS-X-125 | Differential Pressure, +/- 125 Pa | | IPROBE-4000-0020 | 125 Pa (0.5 in. H2O) | Manifold or Tube; Calibrated for Air, N2 |
| Probe-DPS-X-500 | Differential Pressure, +/- 500 Pa | | IPROBE-4000-0021 | 500 Pa (2 in. H2O) | Manifold or Tube; Calibrated for Air, N2 |

* Alternative Snap Calibration Adaptor and Probes available

SNAP CALIBRATION PARTS: Adaptors and Probe Tips

| Ref ID | Name | Probe ID | Range | Notes |
|----------------------|-------------------------------------------------------------------------|-----------------------|------------------|------------------------------------------------------|
| Probe-RTD-X-1-A-M | "RTD Single Adaptor with 1m Cable and Premium connector" | IProbe-4101-0003-A | No Probes | Probe tip with connector order separately |
| Probe-RTD-X-1-DC-A-M | "RTD Single Adaptor + Dry contact with 1m Cable and Premium connector" | IProbe-4101-0002-M | No Probes | Probe tip with connector order separately |
| Probe-RTD-X-1-A-H | "RTD Single Adaptor with 1m Cable and Standard connector" | IProbe-4101-0003-H | No Probes | Probe tip with connector order separately |
| Probe-RTD-X-1-DC-A-H | "RTD Single Adaptor + Dry contact with 1m Cable and Standard connector" | IProbe-4101-0004-H | No Probes | Probe tip with connector order separately |
| Probe-RTD-P-M | "RTD Probe tip only with 1m Cable and Premium connector" | IProbe-4101-0002-P | -198°C to +150°C | "Use with IProbe-4101-0003-A or IProbe-4101-0002-M" |
| Probe-RTD-P-H | "RTD Probe tip only with 1m Cable and Standard connector" | IProbe-4101-0003-HP | -198°C to +150°C | "Use with IProbe-4101-0003-H or IProbe-4101-0004-H" |
| Probe-SNT-X-1-A-M | "PRO Single Adaptor with 1m Cable and Premium connector" | IProbe-4000-0001-C | No Probes | Probe tip with connector order separately |
| Probe-SNT-X-1-DC-A-M | "PRO Dual Adaptor with 1m Cable and Premium connector" | IProbe-4000-0010-D | No Probes | Probe tip with connector order separately |
| Probe-SNT-X-1-A-K | "PRO Single Adaptor with 1m Cable and Standard connector" | IProbe-4000-0001-K | No Probes | Probe tip with connector order separately |
| Probe-SNT-X-1-DC-A-K | "PRO Dual Adaptor with 1m Cable and Standard connector" | IProbe-4000-0010-KD | No Probes | Probe tip with connector order separately |
| Probe-SNT-P-1-M | "PRO Single Probe tip with 1m Cable and Premium connector" | IProbe-4000-0001-P | -30°C to +150°C | "Use with IProbe-4000-0001-C or IProbe-4000-0010-D" |
| Probe-SNT-P-4-M | "PRO Single Probe tip with 4m Cable and Premium connector" | IProbe-4000-0001-P2-0 | -30°C to +150°C | "Use with IProbe-4000-0001-C or IProbe-4000-0010-D" |
| Probe-SNT-P-1-K | "PRO Single Probe tip with 1m Cable and Standard connector" | IProbe-4000-0001-KP | -30°C to +150°C | "Use with IProbe-4000-0001-K or IProbe-4000-0010-KD" |
| Probe-SNT-P-4-K | "PRO Single Probe tip with 4m Cable and Standard connector" | IProbe-4000-0001-P2-K | -30°C to +150°C | "Use with IProbe-4000-0001-K or IProbe-4000-0010-KD" |

OTHER ACCESSORIES

| Name | Ref ID | Probe ID | Notes |
|-------------------|----------------|------------------|----------------------------------------------------------------------------|
| Door contact | Door-Alarm | HW-DOOR-CONTACT | Use with Dry contact |
| Glycol bottle | Gly-bot | XACCES-1000-0001 | IceClear PGX for temperatures > -30C; Wax beads for temperatures < -30C |
| Wall charging kit | HW-PWR-WALL-US | HW-PWR-WALL-US | EU wall plug available on request |

SENTINEL NEXT

Monitor environment - Use low power Wi-Fi



Product Number: XTEMP-3001-0000

Specifications

| | |
|----------------------------------|---------------------------------------------------------|
| Dimensions (HxWxD) | 89mm x 60mm x 14mm (3.50" x 2.36" x 0.55") |
| Weight | 102g (3.60 Oz) |
| Connectors | 10-pin Sensor Connector; micro USB for Charging |
| Battery | Integrated 1000mAh Rechargeable Li-Ion Battery |
| Wi-Fi Protocols | IEEE 802.11b/g/n |
| Wi-Fi Models Supported | Wi-Fi Direct, Infrastructure, Remote |
| Wi-Fi Encryption | WEP, WPA/WPA2 Personal, PEAPv0, PEAPv1, EAP-TLS |
| On Board Data Storage | 1 Week with a Once/Minute Sampling Rate |
| Operating Temperature | 0°C to 40°C on Charger -20°C to 60°C on Battery only |
| Non-operating Temperature | -30°C to 70°C |
| Relative Humidity | 10% to 90% |
| Certifications | FCC, CE |

Software to View Data

Cloud, Enterprise or App based solution available



Contact us:

AEGIS

P.O. Box 2008

Warminster, PA 18974

Phone: Toll Free: 1-800-796-2344

In PA: 215-281-9180

Fax: +1 732 879 0248

SENTINEL NEXT

Monitor environment - Use low power Wi-Fi



PRO Temperature Probe

(Iprobe-4000-0001)

| | |
|-------------------------------------|--------------------------------------------|
| Probe Length & Diameter | Stainless probe: 25mm, Ø 4mm (1", Ø 0.16") |
| Cable Length | 304cm (10ft) |
| Measurement Range | -30°C to +150°C (-22°F to +302°F) |
| Accuracy | ±0.2°C (±0.4°F) at 25°C (77°F) |
| Response Time (to reach 90%) | In water, with stirring: <10sec |
| Display Resolution | 0.1°C (0.1°F) |



RTD - Ultra Low Temperature Probe

(Iprobe-4101-0001)

| | |
|-------------------------------------|--------------------------------------------|
| Probe Length & Diameter | Stainless probe: 25mm, Ø 4mm (1", Ø 0.16") |
| Cable Length | 183cm (6ft) |
| Measurement Range | -200°C to +150°C (-328°F to +302°F) |
| Accuracy | ±0.2°C (±0.4°F) at 25°C (77°F) |
| Response Time (to reach 90%) | In water, with stirring: <10sec |
| Display Resolution | 0.1°C (0.1°F) |
| Optional DI (Digital Input) | dry contact available |



Temperature and Relative Humidity Connector

(Iprobe-4000-0004)

| | |
|--------------------------------------|-----------------------------------|
| Temperature Measurement Range | -40°C to +125°C (-40°F to +257°F) |
| Accuracy | ±0.3°C (±0.5°F) |
| Relative Humidity Range | 0 to +100% RH |
| Response Time (to reach 66%) | 5 to 30sec for T; 8sec for RH |
| Display Resolution | 0.1°C (0.1°F) |

SENTINEL NEXT

Monitor environment - Use low power Wi-Fi



RTD Temperature Probe with Dry Contact

(IPROBE-4101-0004)

| | |
|-------------------------------------|--------------------------------------------|
| Probe Length & Diameter | Stainless probe: 25mm, Ø 4mm (1", Ø 0.16") |
| Cable Length | 183cm (6ft) |
| Measurement Range | -200°C to +150°C (-328°F to +302°F) |
| Accuracy | ±0.2°C (±0.4°F) at 25°C (77°F) |
| Response Time (to reach 90%) | In water, with stirring: <10sec |
| Display Resolution | 0.1°C (0.1°F) |
| Optional DI (Digital Input) | dry contact available |

Door Contact

| | |
|--------------------------|----------------------------------------------------|
| Circuit type | Open loop |
| Operation gap | ½"(13mm) |
| Color | White |
| Terminals | Screw-type |
| Mounting Tabs | Yes |
| Case | High-impact ABS plastic |
| Contacts | Deactivated rhodium on gold under-plating |
| Contact rating | 0.1A@100VDC (max) 1.0A@10VDC (max) 10W (max) |
| Temperature | -15°~160°F (-25°~70°C) |
| Switch cycles | 50 Million (0.1mA@5VDC) |
| Switch Dimensions | 2 1/2"x9/16"x1/2" (63.5x14x13mm) |
| Magnet Dimensions | 2 1/2"x1/2"x1/2" (63.5x13x13mm) |
| Magnet Type | Ferrite |

SENTINEL NEXT

Monitor environment - Use low power Wi-Fi



Large Range CO₂ Probe (0-30%)

(Iprobe-4400-0002)

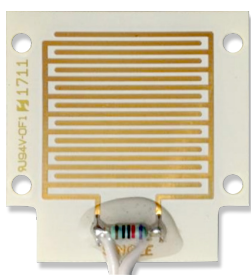
| | |
|-----------------------------------------|--------------------------------------------|
| Probe Dimensions | 7.6cm x 9.5cm x 3.8cm (3" x 3.75" x 1.5") |
| Cable Length | 100cm (~39") |
| Operating Principle | Non-dispersive infrared (NDIR) |
| Measurement range CO₂ | 0 to 30% _{vol} (CO ₂) |
| Measurement RH | 0 to 100% (non-condensing) |
| Measurement range °C | -40 to 60 °C |
| Accuracy | ± 0,25 _{vol} ± 3% of reading |
| Operation temperature range | 0 to 50 °C |
| Operation humidity range | 0 to 95% RH (non-condensing) |
| Display Resolution | 0.1°C (0.1°F) |



Ambient CO₂ Probe

(Iprobe-4400-0001)

| | |
|-----------------------------------------|-------------------------------------------|
| Probe Dimensions | 7.6cm x 9.5cm x 3.8cm (3" x 3.75" x 1.5") |
| Cable Length | 100cm (~39") |
| Operating Principle | Non-dispersive infrared (NDIR) |
| Measurement range CO₂ | 0 to 5000 ppm (CO ₂) |
| Measurement RH | 0 to 100% (non-condensing) |
| Measurement range °C | 0 to 50 °C |
| Accuracy | ± 30ppm ± 3% of reading |
| Operation temperature range | 0 to 50 °C |
| Operation humidity range | 0 to 80% RH (non-condensing) |
| Display Resolution | 0.1°C (0.1°F) |



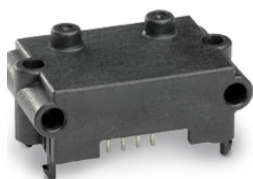
Water (Leak) detection Probe

(Iprobe-4200-0001)

| | |
|-------------------------------------|-------------------------------------|
| Impedance range | 0Ω to 2MΩ (Lower limit theoretical) |
| Accuracy | 1.8V |
| Maximum Current | <0.18mA |
| Response Time (to reach 66%) | 10ms |

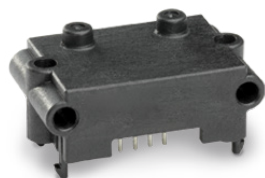
SENTINEL NEXT

Monitor environment - Use low power Wi-Fi



Differential Pressure, +/- 125 Pa (XTEMP-4000-0020)

| | |
|---------------------------------------|------------------|
| Output | I ² C |
| Pneumatic Connection | Manifold or Tube |
| Pressure range (bidirectional) | 125 Pa 0.5" H2O |
| Accuracy of measured value | 3% |
| Lowest detectable pressure | < 0.01 Pa |
| Measurement speed | 0.5 ms |
| Calibrated for | Air, N2 |
| Gas compatibility | Air, inert gases |



Differential Pressure, , +/- 500 Pa (XTEMP-4000-0021)

| | |
|---------------------------------------|------------------|
| Output | I ² C |
| Pneumatic Connection | Manifold or Tube |
| Pressure range (bidirectional) | 500 Pa 2" H2O |
| Accuracy of measured value | 3% |
| Lowest detectable pressure | < 0.02 Pa |
| Measurement speed | 0.5 ms |
| Calibrated for | Air, N2 |
| Gas compatibility | Air, inert gases |



Miscellaneous

Recommended Buffer Solutions
Glycol, Glass Beads, IceClear PGX. Specify buffer solution on order.

NIST or NIST-ILAC Certification available

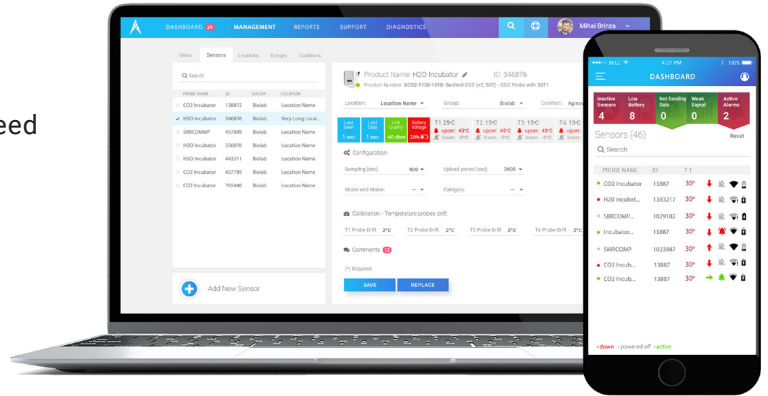
IceClear PGX for -30C to +90C
Wax beads for < -30C

SENTINEL NEXT IoT Portal



The Sentinel Next App provides all the tools you need to monitor your important assets on the go.

- Sensor Configuration Wizard
- Push notification alarms
- Sensor signing
- Graphs/Data
- Sensor Health



| Inactive Sensors | Low Battery | Not Sending Data | Weak Signal | Low Uptime | Active Alarms |
|------------------|-------------|------------------|-------------|------------|---------------|
| 47/156 | 20/156 | 47/156 | 19/156 | 47/156 | 23/156 |

| Probe | T1 | T2 | Status | Signal | Battery |
|------------------------|---------|-----|--------|--------|---------|
| CompartmentT | 74.93 | N/A | 🟢 | 📶 | 🔋 |
| 202032 -20 freezer | -5.10 | N/A | 🟢 | 📶 | 🔋 |
| AUG115Room | 74.50 | N/A | 🟢 | 📶 | 🔋 |
| ContactorCoilA temp | 73.80 | N/A | 🟢 | 📶 | 🔋 |
| ContactorCoilB Temp | 74.53 | N/A | 🟢 | 📶 | 🔋 |
| HAG1 -80, 3-271, 202.. | -121.04 | N/A | 🟢 | 📶 | 🔋 |
| HAG2 -20, 3-221, 202.. | N/A | N/A | 🟢 | 📶 | 🔋 |
| ICprobe_Mason_906 | 72.55 | N/A | 🟢 | 📶 | 🔋 |
| Mason_Pro_113 | 58.64 | N/A | 🟢 | 📶 | 🔋 |
| Mason_Pro_T | 74.48 | N/A | 🟢 | 📶 | 🔋 |
| New1 -80, 3-291, 202.. | -98.05 | N/A | 🟢 | 📶 | 🔋 |
| Sensor_00200002 | 72.91 | N/A | 🟢 | 📶 | 🔋 |
| Sensor_00200003 | 74.26 | N/A | 🟢 | 📶 | 🔋 |

Product: 202032 -20 freezer - ID: 00202032

Product Number: External Pro Probe - XTEMP_2000_0001
 Location: Buck Default L Group: Buck Default G Coalition: Buck Default C

Last Seen: 0h2m | Last Data: 0h2m | Link Quality: -76 dBm | Battery Voltage: 4.00 V

temp1: -5.10 °F -114.00 °F
17.00 °F

Graph | Data | Map | Open Alarms | Closed Alarms | Reports | Health

Type: temp1 °F | Date: Last 100 | From: dd/mm/yyyy | To: dd/mm/yyyy

Upper threshold (17°F) | Lower threshold (-114°F)

10:00 11:00 12:00 13:00 14:00 15:00 16:00 17:00 18:00

IoT Cloud Services

Your data is stored on the Argus Labs Cloud

IoT Cloud-monitoring service designed for the scientific, business and technology needs of the Pharmaceutical, Blood Bank, Biotech, Hospitals, Pharmacy and Life Sciences industries. The solution is 21 CFR Part 11 compliant.

- Evaluation of our sensors
- Low to large number of sensors
- Setups which require web access
- Monitoring 10+ types of sensors
- New asset tracking feature (call us)

Contact us:

AEGIS
 P.O. Box 2008
 Warminster, PA 18974
 Phone: Toll Free: 1-800-796-2344
 In PA: 215-281-9180
 Fax: +1 732 879 0248